

Masterbill

IT Solutions for the Construction Industry

Feasibility
Cost Modelling
Cost Planning
BQ Production
Estimating
Measurement

Elite

“Masterbill Elite & QSCad enabled us to cut the time taken to produce fully measured Groundworks Bills by half, so now we can obtain better tenders and reduce our risk.”

More and more Construction Companies and Developers are beginning to realise that accurate measurements and fully measured BQs need not be sacrificed simply due to tight timescales and hence it is possible to reduce their risk by making use of our latest software.

The Company

Croudace
HOMES GROUP

Croudace Homes Group is a privately owned house building company operating in both the private and public housing sectors throughout the south east of England.

Their mission is to create homes of the highest quality for their customers, to exceed their expectations regarding service and to deliver top levels of performance for their shareholders.

They wished to ensure that they continued to be in an excellent position to maintain growth, maximise returns and minimise their exposure to risk.

The Problem

In an effort to reduce their exposure to risk and maintain control over their development costs the Croudace Board decided to target the Groundworks element of their schemes. By evaluating their performance on previous developments they identified that of all the elements of a scheme it was the Groundworks which held the biggest risk and so needed the tightest control.

The decision to carry out accurate quantity measurement and production of Bills of Quantities for tenders was made but on the proviso that it should not delay commencing the development on site and that the data produced could be used to control costs during the Construction Phase.

“Can your software help us produce an accurate measurement and produce fully measured Bills of Quantities whilst ensuring there is a full audit trail for Post Contract purposes in such a short period of time?” was the question Croudace’s Estimators posed during one of their initial meetings with Masterbill Sales & Marketing Director, Paul Watkins.



Masterbill
IT Solutions for the Construction Industry

2 Woodland Court
Soothouse Spring
Valley Rd, St. Albans
Hertfordshire
AL3 6NR

Tel: +44(0)1727 855563
Fax: +44(0)1727 854626
Web: www.masterbill.com
e-mail: sales@masterbill.com

The Solution

Before Masterbill could commit to delivering such a saving or Croudace could agree to implementing the software we conducted a number of meetings to establish Croudace's exact requirements and the capabilities of the Masterbill software. During this time we established that Croudace required:

- Fast, efficient and accurate measurement of all groundworks elements from the CAD drawings provided.
- The ability to produce Bills of Quantities that combined all Phases of the works for tendering purposes.
- The ability to produce Bills of Quantities for each Phase of the works for Post Contract purposes.
- The ability to re-use data to take advantage of Standard House Types and Typical Details.
- To ensure that Measurements and Documents were consistent no matter which Estimator prepared them.

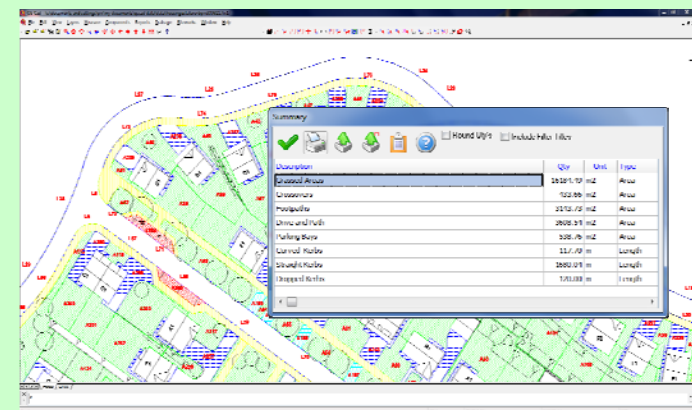
We soon established that QSCad's Siteworks, Drainage and Component measurement facilities would be key to reducing the measurement time and increasing accuracy and that Masterbill Elite's Standard Library of Descriptions, Full Sortation facilities and re-use of data would deliver the BQs required for both tendering and post contract purposes and so gained approval to proceed.

Once again both Croudace and Masterbill put their heads together to find a solution and this resulted in Masterbill carrying out some additional development to enable Croudace to save a significant amount of time by:

- Enabling the QSCad measurements for all Phases to be imported into Masterbill Elite in a single operation but clearly identified to ensure that Phase Bills of Quantities could still be produced.
- Enabling full SMM7 descriptions to be allocated to QSCad measurements within seconds by re-using the allocations carried out on previous projects.

This additional joint development resulted in a further reduction in the time taken to produce the BQs required with Croudace reporting...

“With the direct import from QS CAD we are now able to produce all our Bills within the desired time frame.”



Within a short time of installation and training the Croudace Estimators were beginning to see the benefits of the systems but also identified that the transfer of the measurement data from QSCad into Masterbill Elite was consuming more time that initially anticipated due to the requirement to produce a set of measurements for each Phase of the Works.

Warwick House		Masterbill	
GROUNDWORK			
001: EXCAVATING AND FILLING			
Excavating			
A	Top soil for preservation average 300 deep		
B	To reduce levels maximum depth not exceeding 0.25		
C	maximum depth not exceeding 1.00		
D	maximum depth not exceeding 2.00		
Extra over any types of excavation irrespective of depth			
E	excavating below ground water level		
Breaking out existing materials, extra or excavation irrespective of depth			
F	rock		
G	bottoms of excavations		
H	ground		
J	Disposal of excavated material off site		
K	Disposal of preserved topsoil off site		
L	Imported topsoil		
M	Filling to make up levels average thickness not exceeding 0.2		
N	average thickness exceeding 0.25m		
Compacting			
O	filling		
P	average thickness not exceeding 0.2		
Q	average thickness exceeding 0.25m		
Granular sub-base material type 1, DOB to be obtained off site			
Filling to excavation			
R	average thickness not exceeding 0.2		
S	average thickness exceeding 0.25m		
Granular sub-base material type 1, DOT specification clause 802 to be obtained off site			
Filling to excavation			
T	average thickness not exceeding 0.25m		

Having produced Bills of Quantities based upon a Standard Library of Descriptions in Masterbill Elite Croudace soon identified an additional benefit by making use of the “Matching Prices” function.

“By applying our standard rates to each section we are able to monitor our subcontractors quotations and reject high prices.”